



MONO BAND WiFi ANTENNA

2400 ÷ 2485 MHz

MWD1

POLOMARCONI.IT



POLOMARCONI offers a very wide range of wireless products. Our products can be tailored according to the customer's need.

RAILWAYS AND TRANSPORT

Electrical Specifications

Frequency Band (MHz)	2400 ÷ 2485
Impedance (Ω)	50
VSWR	<1.7
Continuous Max. Power (W)	30
Polarization	vertical
Gain (dB) over $\lambda/4$ monopole	0
Operation Temp. Range ($^{\circ}\text{C}$)	-40° ÷ +70°

Mechanical Specifications

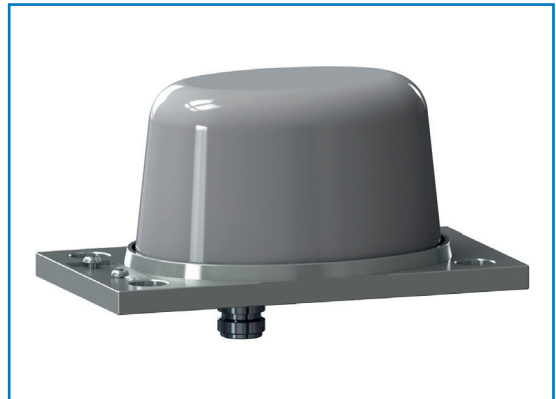
Connectors	Silver plated brass
Type of connection	N female
Dimensions (mm)	70x80x145
Weight (kg)	0.5
Base material	Aluminium with SURTEC 650 treatment
Radome	High impact polycarbonate
Mounting	on metallic surface (600x600 mm minimum)
Reliability	above to 200,000 hours



Patent n° 1548873

Antenna for train with protective means against high voltages.

Patent has been used by SNCF and by the most important producers of trains.



Environmental Characteristics

ATMOSPHERIC and CLIMATIC CONDITIONS according to NF EN 60068

Temperature conditions	-40°C, +70°C
Atmospheric pressure	-40°C, +70°C, 95% HR at 2000 m
Rain, hail, snow, frost	1000 mm/h, 1 J impact, 0.5 m, 3 cm
Combined wind and train speed	530 km/h

MECHANICAL CONDITIONS according to NF EN 60068, 61373 and 15-818

Free falls	1 m
Hits (vertical, cross-sectional, longitudinal)	30m/s ² , 30m/s ² , 50m/s ² , 30ms
Impacts	50 J

GROUNDING and HIGH VOLTAGE PROTECTION according to NF EN 50388 and NF EN 50123

Short-circuit currents flow / time before breaking	70 kA / 5 ms – 40 kA / 100 ms (DC) 31,5 kA / 10 ms – 15 kA / 100 ms (AC)
--	---

MOUNTING FLANGE

Mounting: on a conductive surface with a minimum size of 600x600 mm; it's advisable to keep the mounting surface clean for a better electrical contact.

MWD1 4 holes flange: flange with 4 M10 studs included; see mounting flange A on page 33.
MWD1-3V 3 screws flange: flange with 3 screws included, according to FEDERTRASPORTI 00104/5;

Grounding and high voltage protection: Our antennas have passed the strict SNCF's tests that approved our products as protected against lightning and high-tension voltage thanks to our patented DC and AC grounded system.
Approved by: SNCF, SNCB, TRENITALIA

BY



Made in Italy. We reserve the right to modify these data without any notice.