



# VHF 2 CHANNELS HYBRID COMBINER

with double isolator and VSWR Monitor, 144 ÷ 175 MHz

T06010504

POLOMARCONI.IT

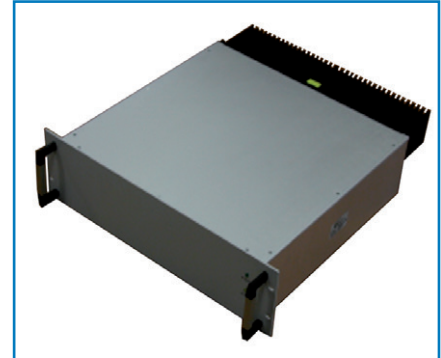


POLOMARCONI offers a very wide range of wireless products. Our products can be tailored according to the customer's need.

PMR

## Electrical Specifications

Frequency Band (MHz)	144 ÷ 175
Impedance ( $\Omega$ )	50
Insertion Loss (dB) included isolators	$\leq 4.5$
VSWR	$< 1.5$
Continuous Max. Input Power (W) all ports simultaneously	100
Isolation (dB) channel to channel	$\geq 65$
Isolation (dB) output to input	$\geq 45$
Power Supply ( $V_{AC}$ ) @47 ÷ 63Hz	85-265 max 100mA
Alarm (output with pull-up resistor)	VSWR default threshold $\geq 2+25\%$ alarm OFF (V) $\geq 10$ alarm ON (V) $< 1$
Minimum Input Power (W) for VSWR and alarms	5
IM3 (dBc) 2 × 49 dBm	$> 70$
Harmonic Suppression (dBc)	$\geq 70$
Operation Temp. Range ( $^{\circ}C$ )	$-20^{\circ} \div +55^{\circ}$
Electrical Safety	EN 60950 EN 60215
EMI / EMC	ETSI EN 301 489-1 /-18



## Mechanical Specifications

Connectors	N f
Alarm Connectors	DIN 9 pin male
PIN OUT	1 Alarm Output (active low) 5, 6, 9 Ground 2, 7, 8 Not connected
Dimensions	3U × 19" × 520mm
Weight (kg)	$< 8$
Front Panel Colour	RAL 7035
Relative Humidity	$< 95\%$ @ $40^{\circ}C$ , not condensing
Vibration	IEC 60068-2-6 0.3mm double amplitude 2g, 10 ÷ 55 Hz 1 octave / min, total test period 30min
Shock	IEC 60068-2-27, 30g for 11ms 18 shocks in 3 positions
MTBF (hours)	$\geq 440000$
Environmental Conditions	IP20



Made in Italy. We reserve the right to modify these data without any notice.