



GSM SPURIOUS SUPPRESSION FILTER

450 ÷ 470 / 876 ÷ 890 / 921 ÷ 925 MHz

T06210951

POLOMARCONI.IT



POLOMARCONI offers a very wide range of wireless products. Our products can be tailored according to the customer's need.

RAILWAYS AND TRANSPORT

Electrical Specifications

Impedance (Ω) 50

Max. Continuous Power (dBm) at any port 40

Operating Temp. Range ($^{\circ}\text{C}$) -25 ÷ +70

440 MHz Section

Frequency Band (MHz) 450 ÷ 470

Insertion Loss (dB) ≤ 0.8

Return Loss (dB) ≥ 20

Rejection (dB) @ 926.5 MHz ≥ 70

880 MHz Section

Frequency Band (MHz) 876 ÷ 890

Insertion Loss (dB) ≤ 1.3
(typical : 0.7)

Return Loss (dB) ≥ 18
(typical : 20)

Rejection (dB) @ 926.5 MHz ≥ 70

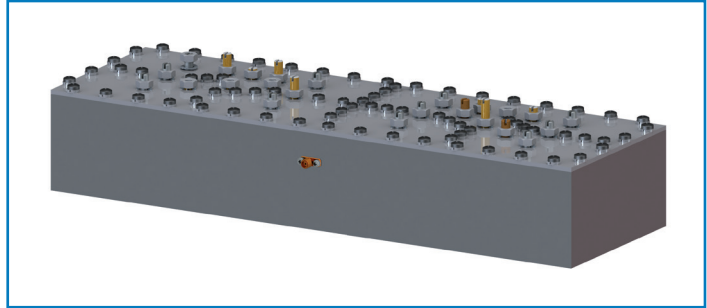
923 MHz Section

Frequency Band (MHz) 921 ÷ 925

Insertion Loss (dB) Max: ≤ 3
(typical : 2.6)

Return Loss (dB) ≥ 15
(typical : 20)

Rejection (dB) @ 926.5 MHz ≥ 30



Mechanical Specifications

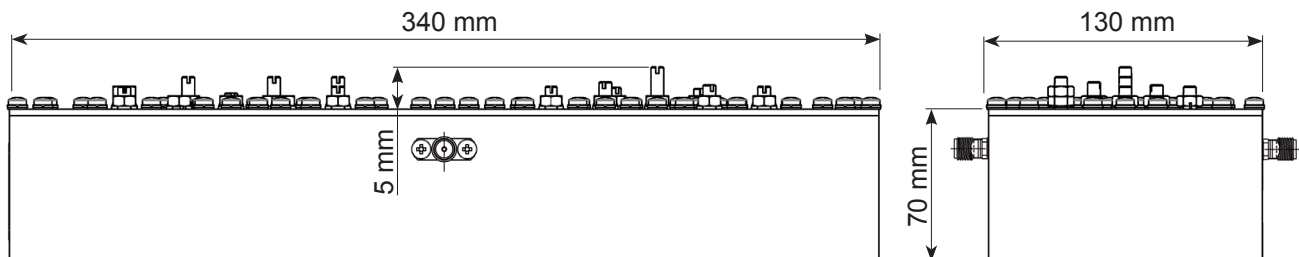
Connectors 2 x SMA female

Dimensions (mm) excluding connectors 340 × 130 × 75

Weight (kg) < 1.5

Material Aluminium alloy

Finishing Silver plating



Dimensions (mm)



Made in Italy. We reserve the right to modify these data without any notice.

T06210951-DS REV. 00 - 28/10/2015